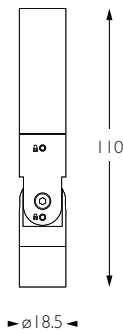




Category Interior use only IP20
Material Machined Aluminium
Finish Brushed Aluminium | Black | White | Custom
System Eutrac | Monopoint | LV tracks
Lockable Pan & Tilt
Accessories Snoots
System Power 1.9W
Module Output 140lm
Absolute Output 130lm
LOR 93%
Colour Temperature 3000K | 2700K | *
CRI Ra: 95 **TM-30** Rf: 93 Rg: 99
Optics 12°
Gear Type Dimmable options available
Weight 60g

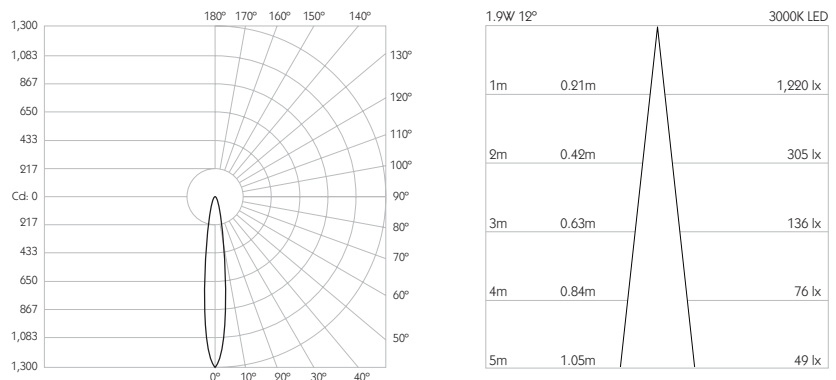


* Please enquire as to the availability of non-standard Colour Temperatures.

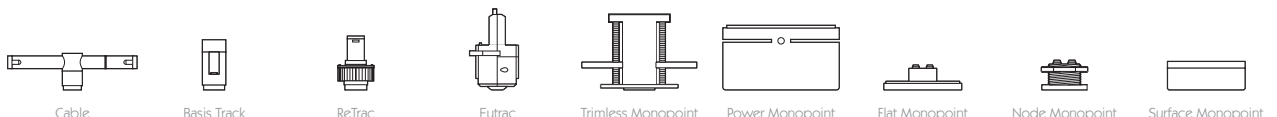


Pico 1 is a discreet 95CRI LED spotlight. Based on a minimal aesthetic with advanced features and benefits, the spotlight comes as standard in white, black and brushed aluminium finishes, and has three site changeable optics for flexible distribution. Movement is aided with a low friction bearing rotation and constant torque tilt mechanism, lockable in both pan and tilt. The Precision Lighting Jack Plug system enables the luminaire to be easily disconnected and reconnected to all of Precision Lighting's systems, offering flexibility throughout the product's lifetime. The onboard 24V driver ensures overcurrent protection and is not polarity sensitive. Pico 1 is machined from aerospace grade 6063-T6 aluminium, delivering a lumen package of 140lm at 1.9W.

Product Photometry independently tested in accordance with LM-79



IP 20	95 CRI	CE	ETL US
LED	1.9W	24V	PART L
360°	180°	0.5m	Accessories Available



Grey	CA-701-AL-XX9512	BT-701-AL-XX9512	RT-701-AL-XX9512	EUT3-701-AL-XX9512	MPS-701-AL-XX9512	MPX-701-AL-XX9512	MPY-701-AL-XX9512	MPZ-701-AL-XX9512
Black			RT-701-BK-XX9512	EUT3-701-BK-XX9512	MPS-701-BK-XX9512	MPX-701-BK-XX9512	MPY-701-BK-XX9512	MPZ-701-BK-XX9512
White			RT-701-WH-XX9512	EUT3-701-WH-XX9512	MPS-701-WH-XX9512	MPX-701-WH-XX9512	MPY-701-WH-XX9512	MPZ-701-WH-XX9512

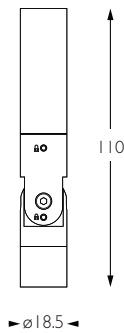
For 3000K Substitute XX with 30 | For 2700K Substitute XX with 27



Category Interior use only IP20
Material Machined Aluminium
Finish Brushed Aluminium | Black | White | Custom
System Eutrac | Monopoint | LV tracks
Lockable Pan & Tilt
Accessories Snoots
System Power 1.9W
Module Output 140lm
Absolute Output 119lm
LOR 85%
Colour Temperature 3000K | 2700K | *
CRI Ra: 95 **TM-30** Rf: 93 Rg: 99
Optics 30°
Gear Type Dimmable options available
Weight 60g

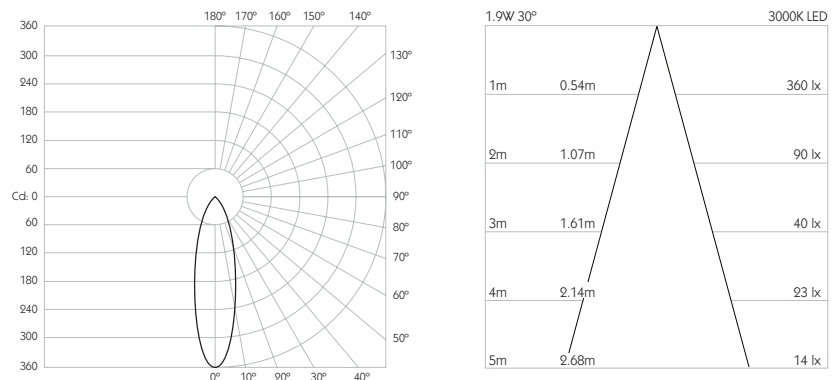


* Please enquire as to the availability of non-standard Colour Temperatures.



Pico 1 is a discreet 95CRI LED spotlight. Based on a minimal aesthetic with advanced features and benefits, the spotlight comes as standard in white, black and brushed aluminium finishes, and has three site changeable optics for flexible distribution. Movement is aided with a low friction bearing rotation and constant torque tilt mechanism, lockable in both pan and tilt. The Precision Lighting Jack Plug system enables the luminaire to be easily disconnected and reconnected to all of Precision Lighting's systems, offering flexibility throughout the product's lifetime. The onboard 24V driver ensures overcurrent protection and is not polarity sensitive. Pico 1 is machined from aerospace grade 6063-T6 aluminium, delivering a lumen package of 140lm at 1.9W.

Product Photometry independently tested in accordance with LM-79



IP 20	95 CRI	CE	ETL US
LED	1.9W	24V	PART L
360°	180°	0.5m	Accessories Available

Cable	Basis Track	ReTrac	Eutrac	Trimless Monopoint	Power Monopoint	Flat Monopoint	Node Monopoint	Surface Monopoint
CA-701-AL-XX9530	BT-701-AL-XX9530	RT-701-AL-XX9530	EUT3-701-AL-XX9530	MPS-701-AL-XX9530		MPX-701-AL-XX9530	MPY-701-AL-XX9530	MPZ-701-AL-XX9530
		RT-701-BK-XX9530	EUT3-701-BK-XX9530	MPS-701-BK-XX9530		MPX-701-BK-XX9530	MPY-701-BK-XX9530	MPZ-701-BK-XX9530
		RT-701-WH-XX9530	EUT3-701-WH-XX9530	MPS-701-WH-XX9530		MPX-701-WH-XX9530	MPY-701-WH-XX9530	MPZ-701-WH-XX9530

For 3000K Substitute XX with 30 | For 2700K Substitute XX with 27

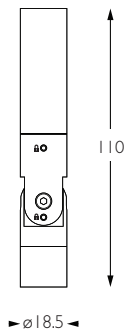
WIDE FLOOD



Category Interior use only IP20
Material Machined Aluminium
Finish Brushed Aluminium | Black | White | Custom
System Eutrac | Monopoint | LV tracks
Lockable Pan & Tilt
Accessories Snoots
System Power 1.9W
Module Output 140lm
Absolute Output 130lm
LOR 93%
Colour Temperature 3000K | 2700K | *
CRI Ra: 95 **TM-30** Rf: 93 Rg: 99
Optics 60°
Gear Type Dimmable options available
Weight 60g

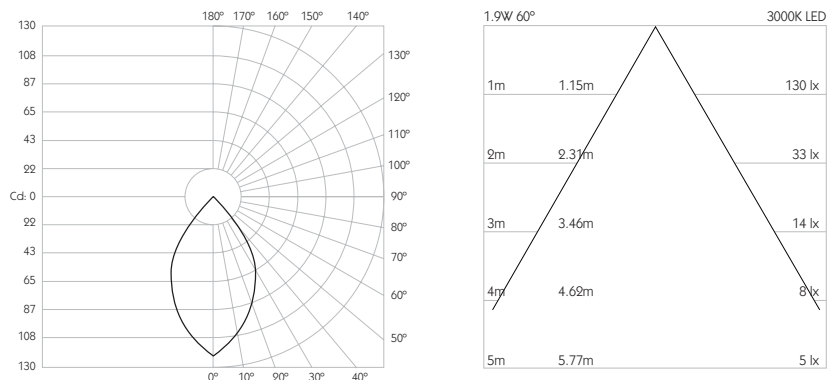


* Please enquire as to the availability of non-standard Colour Temperatures.

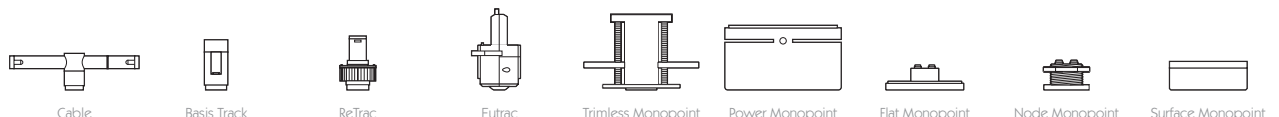


Pico 1 is a discreet 95CRI LED spotlight. Based on a minimal aesthetic with advanced features and benefits, the spotlight comes as standard in white, black and brushed aluminium finishes, and has three site changeable optics for flexible distribution. Movement is aided with a low friction bearing rotation and constant torque tilt mechanism, lockable in both pan and tilt. The Precision Lighting Jack Plug system enables the luminaire to be easily disconnected and reconnected to all of Precision Lighting's systems, offering flexibility throughout the product's lifetime. The onboard 24V driver ensures overcurrent protection and is not polarity sensitive. Pico 1 is machined from aerospace grade 6063-T6 aluminium, delivering a lumen package of 140lm at 1.9W.

Product Photometry independently tested in accordance with LM-79



IP 20	95 CRI	CE	ETL US
LED	1.9W	24V	PART L
360°	180°	0.5m	Accessories Available



Grey	CA-701-AL-XX9560	BT-701-AL-XX9560	RT-701-AL-XX9560	EUT3-701-AL-XX9560	MPS-701-AL-XX9560	MPX-701-AL-XX9560	MPY-701-AL-XX9560	MPZ-701-AL-XX9560
Black			RT-701-BK-XX9560	EUT3-701-BK-XX9560	MPS-701-BK-XX9560	MPX-701-BK-XX9560	MPY-701-BK-XX9560	MPZ-701-BK-XX9560
White			RT-701-WH-XX9560	EUT3-701-WH-XX9560	MPS-701-WH-XX9560	MPX-701-WH-XX9560	MPY-701-WH-XX9560	MPZ-701-WH-XX9560

For 3000K Substitute XX with 30 | For 2700K Substitute XX with 27