

DISCUS S11

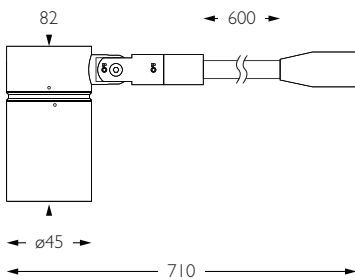
NARROW SPOT | LONG SNOOT



- Category** Interior use only IP20
- Material** Machined Aluminium
- Finish** Brushed Aluminium | Black | White | Custom
- System** Monopoint | LV tracks
- Lockable** Pan & Tilt
- Accessories** Snoots | Louvres | Lenses
- System Power** 3.6W
- Module Output** 305lm
- Absolute Output** 294lm
- LOR** 96%
- Colour Temperature** 3000K | 2700K | *
- CRI** Ra: 95 **TM-30** Rf: 93 Rg: 99
- Optics** 14°
- Gear Type** Dimmable options available
- Weight** 258g
- Stem Length** 600mm | Custom available upon request

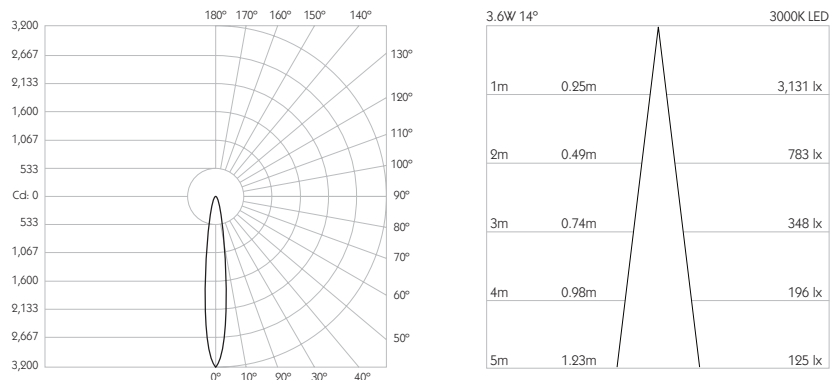


* Please enquire as to the availability of non-standard Colour Temperatures.



Discus S11 is a compact 95CRI LED spotlight, mounted to a 600mm stem. The spotlight comes as standard in white, black and brushed aluminium finishes, and has three site changeable optics for flexible distribution. Movement is aided with a low friction bearing rotation and constant torque tilt mechanism, both lockable in pan and tilt. The Precision Lighting Jack Plug system enables the luminaire to be easily disconnected and reconnected to all of Precision Lighting's systems, offering flexibility throughout the product's lifetime. The onboard 24V driver ensures overcurrent protection and is not polarity sensitive. Discus S11 is machined from Aerospace grade 6063-T6 aluminium, delivering a lumen package of 305lm at 3.6W.

Product Photometry independently tested in accordance with LM-79



IP 20	95 CRI	CE	ETL US
LED	3.6W	24V	PART L
360°	180°	0.5m	Accessories Available

	BT-782-AL-XX9514	RT-782-AL-XX9514		MPS-782-AL-XX9514		MPX-782-AL-XX9514	MPY-782-AL-XX9514	MPZ-782-AL-XX9514
		RT-782-BK-XX9514		MPS-782-BK-XX9514		MPX-782-BK-XX9514	MPY-782-BK-XX9514	MPZ-782-BK-XX9514
		RT-782-WH-XX9514		MPS-782-WH-XX9514		MPX-782-WH-XX9514	MPY-782-WH-XX9514	MPZ-782-WH-XX9514

For 3000K Substitute XX with 30 | For 2700K Substitute XX with 27

DISCUS S11

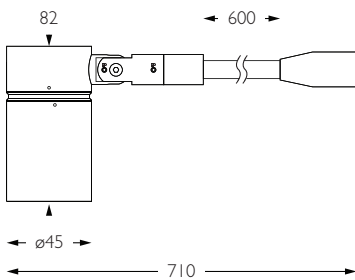
SPOT | LONG SNOOT



- Category** Interior use only IP20
- Material** Machined Aluminium
- Finish** Brushed Aluminium | Black | White | Custom
- System** Monopoint | LV tracks
- Lockable** Pan & Tilt
- Accessories** Snoots | Louvres | Lenses
- System Power** 3.6W
- Module Output** 305lm
- Absolute Output** 277lm
- LOR** 91%
- Colour Temperature** 3000K | 2700K | *
- CRI** Ra: 95 **TM-30** Rf: 93 Rg: 99
- Optics** 20°
- Gear Type** Dimmable options available
- Weight** 258g
- Stem Length** 600mm | Custom available upon request

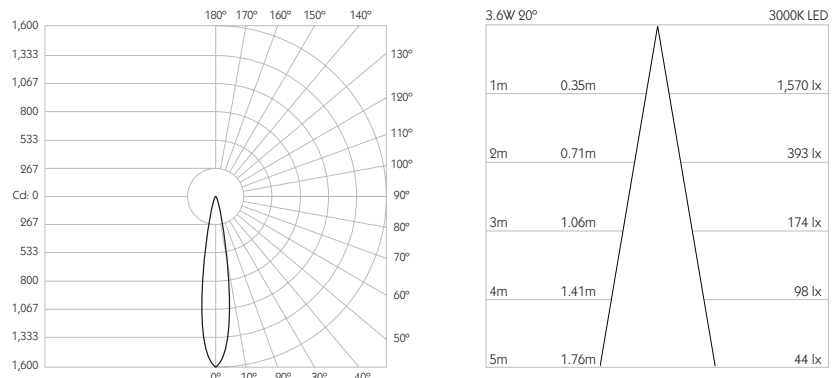


* Please enquire as to the availability of non-standard Colour Temperatures.

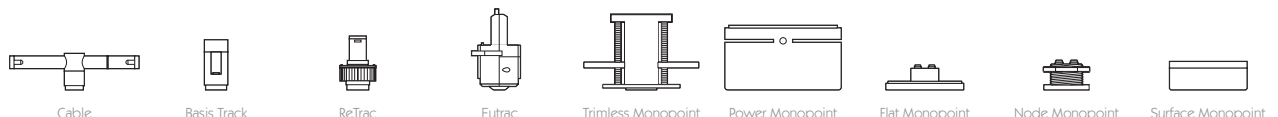


Discus S11 is a compact 95CRI LED spotlight, mounted to a 600mm stem. The spotlight comes as standard in white, black and brushed aluminium finishes, and has three site changeable optics for flexible distribution. Movement is aided with a low friction bearing rotation and constant torque tilt mechanism, both lockable in pan and tilt. The Precision Lighting Jack Plug system enables the luminaire to be easily disconnected and reconnected to all of Precision Lighting's systems, offering flexibility throughout the product's lifetime. The onboard 24V driver ensures overcurrent protection and is not polarity sensitive. Discus S11 is machined from Aerospace grade 6063-T6 aluminium, delivering a lumen package of 305lm at 3.6W.

Product Photometry independently tested in accordance with LM-79



IP 20	95 CRI	CE	ETL US
LED	3.6W	24V	PART L
360°	180°	0.5m	Accessories Available



	BT-782-AL-XX9520	RT-782-AL-XX9520	MPS-782-AL-XX9520	MPX-782-AL-XX9520	MPY-782-AL-XX9520	MPZ-782-AL-XX9520
		RT-782-BK-XX9520	MPS-782-BK-XX9520	MPX-782-BK-XX9520	MPY-782-BK-XX9520	MPZ-782-BK-XX9520
	RT-782-WH-XX9520		MPS-782-WH-XX9520	MPX-782-WH-XX9520	MPY-782-WH-XX9520	MPZ-782-WH-XX9520

For 3000K Substitute XX with 30 | For 2700K Substitute XX with 27

DISCUS S11

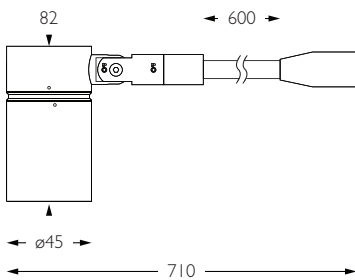
FLOOD | LONG SNOOT



- Category** Interior use only IP20
- Material** Machined Aluminium
- Finish** Brushed Aluminium | Black | White | Custom
- System** Monopoint | LV tracks
- Lockable** Pan & Tilt
- Accessories** Snoots | Louvres | Lenses
- System Power** 3.6W
- Module Output** 305lm
- Absolute Output** 266lm
- LOR** 87%
- Colour Temperature** 3000K | 2700K | *
- CRI** Ra: 95 **TM-30** Rf: 93 Rg: 99
- Optics** 30°
- Gear Type** Dimmable options available
- Weight** 258g
- Stem Length** 600mm | Custom available upon request

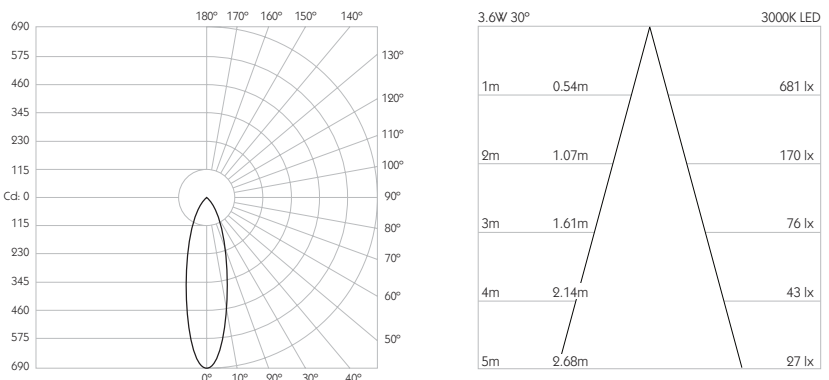


* Please enquire as to the availability of non-standard Colour Temperatures.



Discus S11 is a compact 95CRI LED spotlight, mounted to a 600mm stem. The spotlight comes as standard in white, black and brushed aluminium finishes, and has three site changeable optics for flexible distribution. Movement is aided with a low friction bearing rotation and constant torque tilt mechanism, both lockable in pan and tilt. The Precision Lighting Jack Plug system enables the luminaire to be easily disconnected and reconnected to all of Precision Lighting's systems, offering flexibility throughout the product's lifetime. The onboard 24V driver ensures overcurrent protection and is not polarity sensitive. Discus S11 is machined from Aerospace grade 6063-T6 aluminium, delivering a lumen package of 305lm at 3.6W.

Product Photometry independently tested in accordance with LM-79



IP 20	95 CRI	CE	ETL US
LED	3.6W	24V	PART L
360°	180°	0.5m	Accessories Available

	BT-782-AL-XX9530	RT-782-AL-XX9530		MPS-782-AL-XX9530		MPX-782-AL-XX9530	MPY-782-AL-XX9530	MPZ-782-AL-XX9530
		RT-782-BK-XX9530		MPS-782-BK-XX9530		MPX-782-BK-XX9530	MPY-782-BK-XX9530	MPZ-782-BK-XX9530
		RT-782-WH-XX9530		MPS-782-WH-XX9530		MPX-782-WH-XX9530	MPY-782-WH-XX9530	MPZ-782-WH-XX9530

For 3000K Substitute XX with 30 | For 2700K Substitute XX with 27