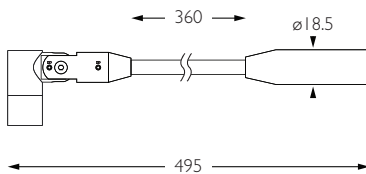




- Category** Interior use only IP20
- Material** Machined Aluminium
- Finish** Brushed Aluminium | Black | White | Custom
- System** Monopoint | LV tracks
- Lockable** Pan & Tilt
- Accessories** Snoots
- System Power** 1.9W
- Module Output** 140lm
- Absolute Output** 130lm
- LOR** 93%
- Colour Temperature** 3000K | 2700K | *
- CRI** Ra: 95 **TM-30** Rf: 93 Rg: 99
- Optics** 12°
- Gear Type** Dimmable options available
- Weight** 100g
- Stem Length** 360mm | Custom available upon request

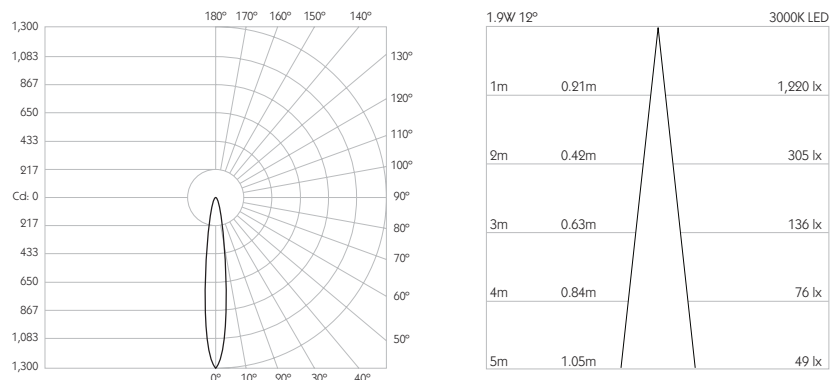


* Please enquire as to the availability of non-standard Colour Temperatures.

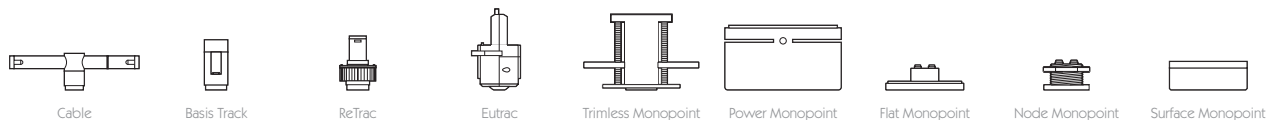


Pico S1 is a discreet 95CRI LED, mounted to a 360mm stem, other stem lengths are available on request. The spotlight comes as standard in white, black and brushed aluminium finishes, and has three site changeable optics for flexible distribution. Movement is aided with a low friction bearing rotation and constant torque tilt mechanism, lockable in both pan and tilt. The Precision Lighting Jack Plug system enables the luminaire to be easily disconnected and reconnected to all of Precision Lighting's systems, offering flexibility throughout the product's lifetime. The onboard 24V driver ensures overcurrent protection and is not polarity sensitive. Pico S1 is machined from aerospace grade 6063-T6 aluminium, delivering a lumen package of 140lm at 1.9W.

Product Photometry independently tested in accordance with LM-79



IP 20	95 CRI	CE	ETL US
LED	1.9W	24V	PART L
360°	180°	0.5m	Accessories Available

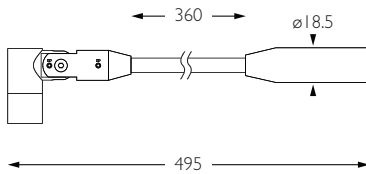


Grey	BT-702-AL-XX9512	RT-702-AL-XX9512	MPS-702-AL-XX9512	MPX-702-AL-XX9512	MPY-702-AL-XX9512	MPZ-702-AL-XX9512
Black		RT-702-BK-XX9512	MPS-702-BK-XX9512	MPX-702-BK-XX9512	MPY-702-BK-XX9512	MPZ-702-BK-XX9512
White		RT-702-WH-XX9512	MPS-702-WH-XX9512	MPX-702-WH-XX9512	MPY-702-WH-XX9512	MPZ-702-WH-XX9512

For 3000K Substitute XX with 30 | For 2700K Substitute XX with 27

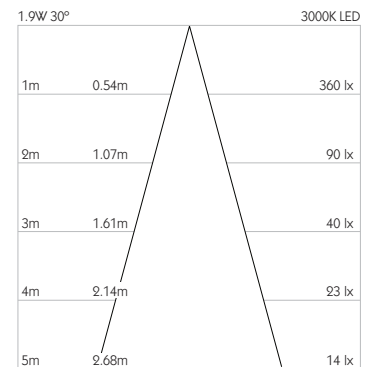
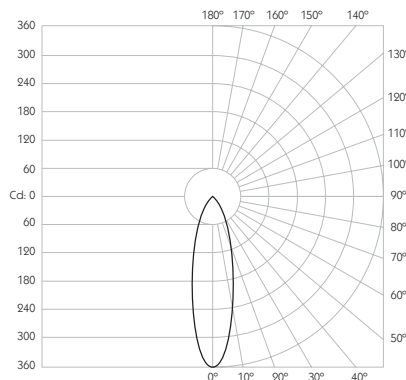


Category Interior use only IP20
Material Machined Aluminium
Finish Brushed Aluminium | Black | White | Custom
System Monopoint | LV tracks
Lockable Pan & Tilt
Accessories Snoots
System Power 1.9W
Module Output 140lm
Absolute Output 119lm
LOR 85%
Colour Temperature 3000K | 2700K | *
CRI Ra: 95 **TM-30** Rf: 93 Rg: 99
Optics 30°
Gear Type Dimmable options available
Weight 100g
Stem Length 360mm | Custom available upon request
 * Please enquire as to the availability of non-standard Colour Temperatures.



Pico S1 is a discreet 95CRI LED, mounted to a 360mm stem, other stem lengths are available on request. The spotlight comes as standard in white, black and brushed aluminium finishes, and has three site changeable optics for flexible distribution. Movement is aided with a low friction bearing rotation and constant torque tilt mechanism, lockable in both pan and tilt. The Precision Lighting Jack Plug system enables the luminaire to be easily disconnected and reconnected to all of Precision Lighting's systems, offering flexibility throughout the product's lifetime. The onboard 24V driver ensures overcurrent protection and is not polarity sensitive. Pico S1 is machined from aerospace grade 6063-T6 aluminium, delivering a lumen package of 140lm at 1.9W.

Product Photometry independently tested in accordance with LM-79



IP 20	95 CRI	CE	ETL US
LED	1.9W	24V	PART L
360°	180°	0.5m	Accessories Available

Accessories	Cable	Basis Track	ReTrac	Eutrac	Trimless Monopoint	Power Monopoint	Flat Monopoint	Node Monopoint	Surface Monopoint
		BT-702-AL-XX9530	RT-702-AL-XX9530		MPS-702-AL-XX9530		MPX-702-AL-XX9530	MPY-702-AL-XX9530	MPZ-702-AL-XX9530
			RT-702-BK-XX9530		MPS-702-BK-XX9530		MPX-702-BK-XX9530	MPY-702-BK-XX9530	MPZ-702-BK-XX9530
			RT-702-WH-XX9530		MPS-702-WH-XX9530		MPX-702-WH-XX9530	MPY-702-WH-XX9530	MPZ-702-WH-XX9530

For 3000K Substitute XX with 30 | For 2700K Substitute XX with 27

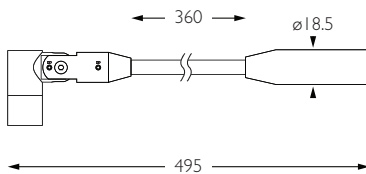
WIDE FLOOD



- Category** Interior use only IP20
- Material** Machined Aluminium
- Finish** Brushed Aluminium | Black | White | Custom
- System** Monopoint | LV tracks
- Lockable** Pan & Tilt
- Accessories** Snoots
- System Power** 1.9W
- Module Output** 140lm
- Absolute Output** 130lm
- LOR** 93%
- Colour Temperature** 3000K | 2700K | *
- CRI** Ra: 95 **TM-30** Rf: 93 Rg: 99
- Optics** 60°
- Gear Type** Dimmable options available
- Weight** 100g
- Stem Length** 360mm | Custom available upon request

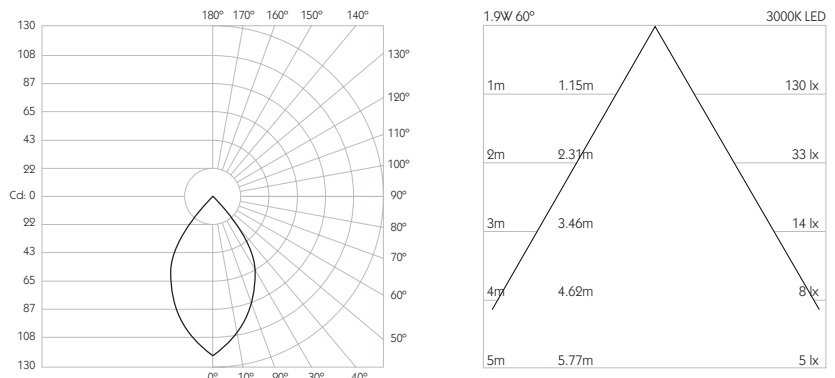


* Please enquire as to the availability of non-standard Colour Temperatures.



Pico S1 is a discreet 95CRI LED, mounted to a 360mm stem, other stem lengths are available on request. The spotlight comes as standard in white, black and brushed aluminium finishes, and has three site changeable optics for flexible distribution. Movement is aided with a low friction bearing rotation and constant torque tilt mechanism, lockable in both pan and tilt. The Precision Lighting Jack Plug system enables the luminaire to be easily disconnected and reconnected to all of Precision Lighting's systems, offering flexibility throughout the product's lifetime. The onboard 24V driver ensures overcurrent protection and is not polarity sensitive. Pico S1 is machined from aerospace grade 6063-T6 aluminium, delivering a lumen package of 140lm at 1.9W.

Product Photometry independently tested in accordance with LM-79



	BT-702-AL-XX9560	RT-702-AL-XX9560		MPS-702-AL-XX9560		MPX-702-AL-XX9560	MPY-702-AL-XX9560	MPZ-702-AL-XX9560
		RT-702-BK-XX9560		MPS-702-BK-XX9560		MPX-702-BK-XX9560	MPY-702-BK-XX9560	MPZ-702-BK-XX9560
		RT-702-WH-XX9560		MPS-702-WH-XX9560		MPX-702-WH-XX9560	MPY-702-WH-XX9560	MPZ-702-WH-XX9560

For 3000K Substitute XX with 30 | For 2700K Substitute XX with 27