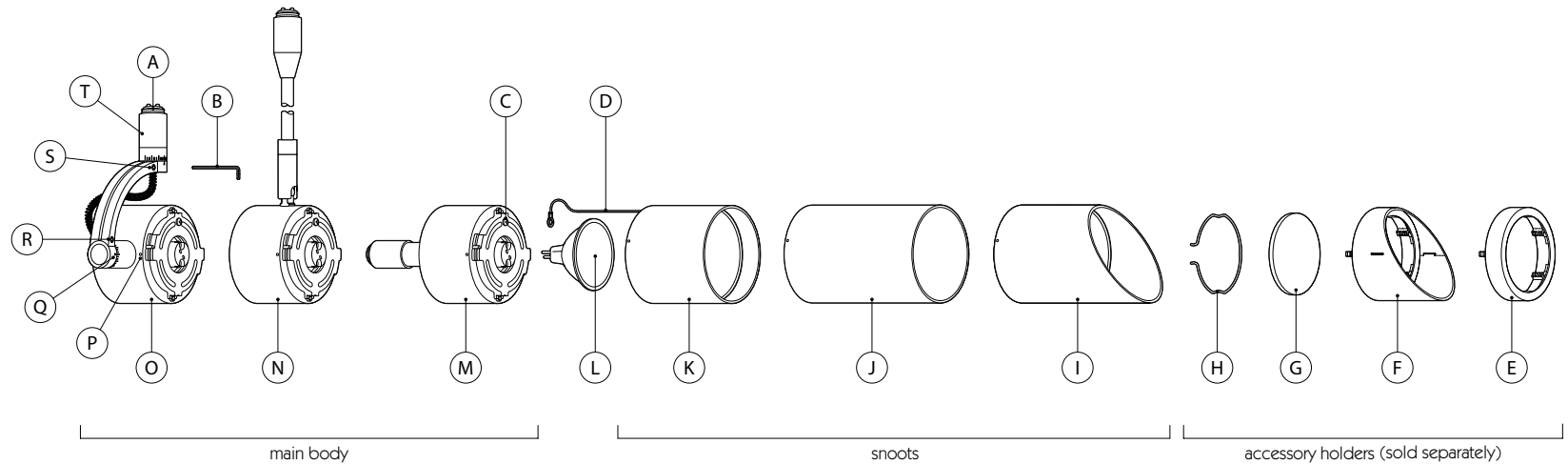


IMPORTANT SAFETY INFORMATION

READ ALL INSTRUCTIONS BEFORE USING THESE PRODUCTS. SAVE THESE INSTRUCTIONS FOR LATER REFERENCE.

1. All systems must be installed by a suitably qualified professional only. Installations must conform to national installation and accident prevention regulations.
2. Do not install any fixture closer than 150mm from any combustible material. Do not install these products in a damp or wet location.
3. To reduce the risk of fire and burns, do not install these products where exposed bare conductors can be shorted or contact any conductive materials. Do not conceal or extend exposed conductors through a building wall.
4. Ensure all connections are tight. Bad connections can cause overheating, arcing and a potential fire risk.
5. Always use appropriate lamps (MR11 or MR16) and ensure they are fitted securely.
6. Use only as described in this Precision Lighting manual.
7. Use only Precision Lighting recommended accessories.
8. Ensure that the luminaire is switched off at mains supply before touching.
9. Luminaires may be extremely hot, allow to cool before touching.
10. These are low voltage luminaires, they must be connected to an appropriate transformer.
11. Regular cleaning of these products is important. Switch off at mains supply and allow to cool before touching. Clean fittings with a soft damp cloth and allow to dry before reconnecting power supply.

KEY PRODUCT FEATURES



Some features repeated on evo-r and evo-s but not shown. Safety leash present on all Evo 16, Evo R16 & Evo S16 snoots.

- | | | | |
|------------------------------|-------------------------------|------------------------|--------------------------|
| A. jack plug connector | F. wall wash accessory holder | K. short snoot | P. snoot alignment guide |
| B. 2mm allen key | G. accessory (up to 2) | L. lamp (QR-CBC 35/51) | Q. angle gauge |
| C. leash screw | H. accessory clip | M. evo-r body | R. tilt lock (evo only) |
| D. safety leash | I. wall wash snoot | N. evo-s body | S. pan lock (evo only) |
| E. standard accessory holder | J. long snoot | O. evo body | T. jack plug collar |

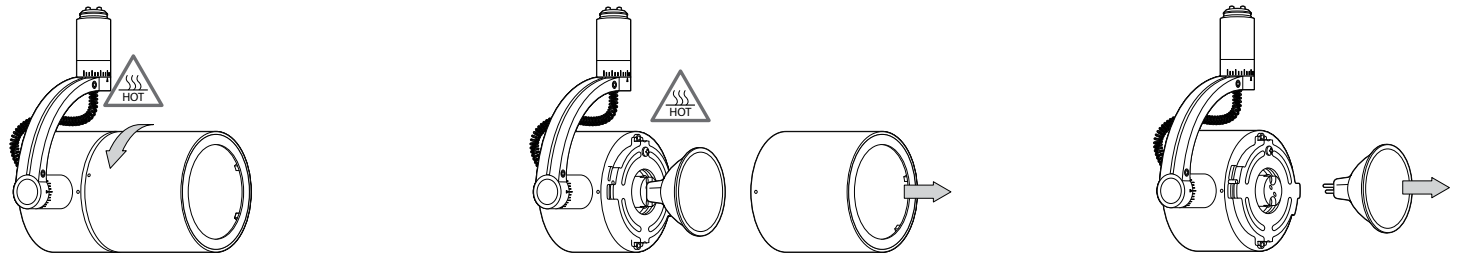
Model shown is Evo with short snoot. The same procedures apply for Evo R & Evo S and other snoot options with the exception of section 4.

1. Replacing the luminaire's lamp.

CAUTION lamp and lamp housing may be extremely hot. Allow to cool before touching.

- i. Twist snoot anti-clockwise and remove.
- ii. Replace failed lamp, ensuring it is connected securely.
- iii. To reattach snoot, align indicators as shown and twist clockwise until you hear a click.

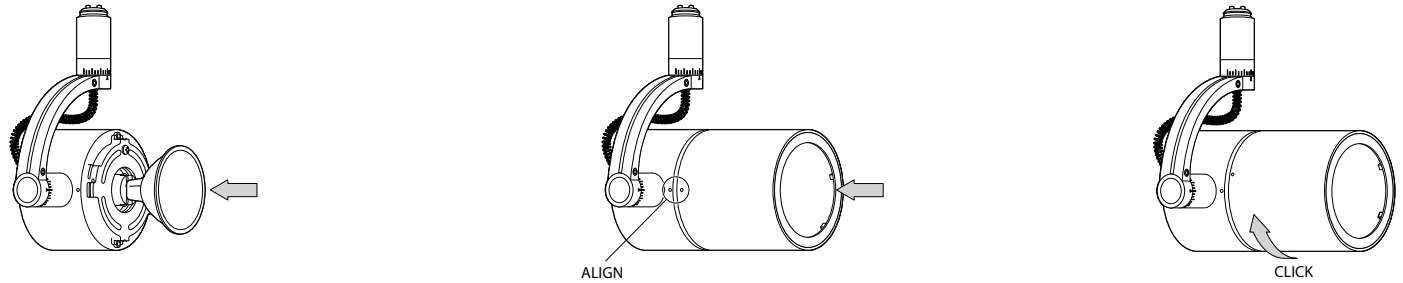
1.



2. Attaching the safety leash (if fitted).

- i. Remove lamp housing as indicated in section 1.
- ii. Attach leash using leash screw on main body.
- iii. Replace lamp housing as directed in section 1.

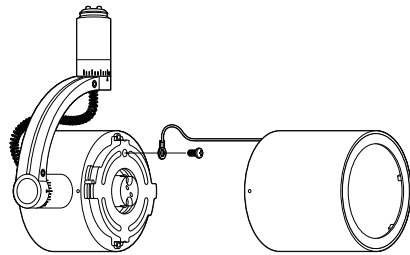
NOTE ensure safety leash is contained within lamp housing before reattaching to base.



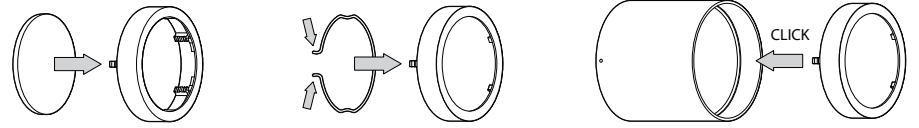
3. Installing accessories using the accessory holder.

- i. Fit up to 2 accessories into accessory holder.
- ii. Secure accessories in place using retaining clip.
- iii. Insert accessory holder into snoot until it clicks into place.

2.



3.

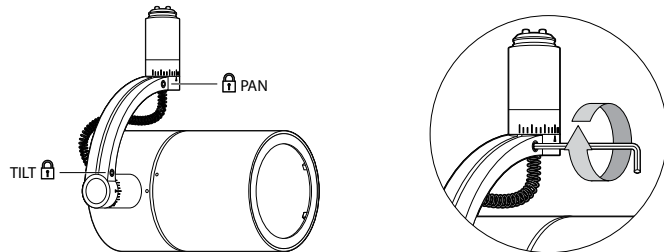


4. Locking the luminaire in Pan and Tilt.

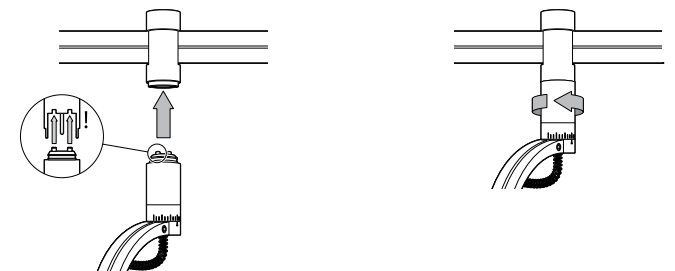
- i. Adjust luminaire to desired position, using angle gauge if required.
- ii. Lock luminaire position using 2mm Allen key provided.

NOTE only adjust luminaire position when unlocked.

4.



5.



5. Installing the luminaire using Jack Plug connector.

Optional Unscrew locking screws 2mm, to lock the luminaire orientation within the jackplug.

- i. Insert jack plug into monopoint or track system ensuring locking screws are aligned.
- ii. Rotate jack plug collar until luminaire is securely fastened.

NOTE basis track shown, actual system may vary.