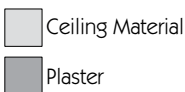
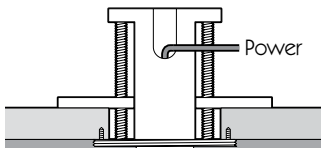
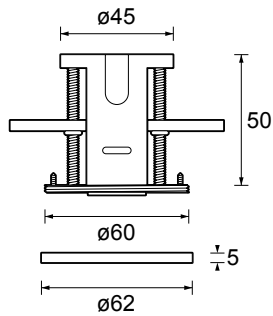


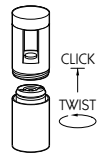


Category Interior use only IP20
Material Machined Aluminium
Canopy Finish Brushed Aluminium | Rubbed Bronze | Black | White
System Jack Plug Connector
LV Rating 75W Max at 12V
LED Rating 150W AT 24V
Cut Out Hole ø45mm
Minimum Ceiling Void Depth 55mm
Maximum Material Thickness 40mm
Low Voltage Connection Blue Crimp [not terminal block]
Accessories Canopy | Solid Canopy | Plug
Weight AL - 135g



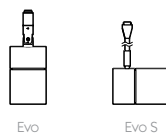
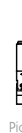
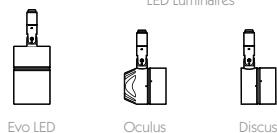
Created to answer a specific design requirement in a Grade I listed building, the Trimless Monopoint creates a minimal Jack Plug point for Precision Lighting's range of spotlights. Plastering up to the Jack Plug leaves a 19mm hole which can be concealed with a flush decorative cap when not in use. Alternatively, a discreet 62mm finishing Canopy can be fitted over the front. This Canopy is available in brushed aluminium, rubbed bronze, black and white finishes, with custom finishes available on request.

The Jack Plug system allows the luminaires to be easily removed for cleaning or relamping. The luminaires click into the Jack Plug socket, the threaded jacket then screws into position to lock the connection in place. Once fixed, the luminaires are free to rotate or alternatively, can be secured in place using two locking pins.



IP 20	12V 75W	24V 150W	REMOTE T SPECIFY	CE	Ø45mm	Accessories Available
-------	---------	----------	------------------	----	-------	-----------------------

LED Luminaires



LV Luminaires



•	•	•	•	•	•	•	•	•	•	•
•	•	•	•	•	•	•	•	•	•	•
•	•	•	•	•	•	•	•	•	•	•