

Precision Lighting is a design led specialist lighting manufacturer, founded with the aim of supplying lighting solutions to design professionals. Our range of high specification, precision engineered lighting systems and luminaires is extremely versatile, and focuses on providing excellent beam and glare control.

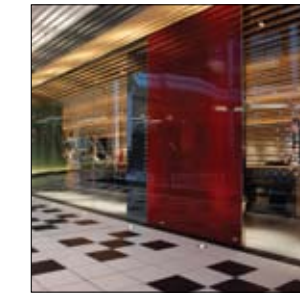
This brochure sees the introduction of the Evo spotlight and ReTrac low voltage track system. These two product ranges combine all the experience gained over ten years in the lighting industry, and our most intensive design process so far, to produce our most comprehensively engineered and user friendly products to date. We are also developing LED options for our luminaires, and have already supplied them on several custom projects.

A core part of our business has always been the design and supply of numerous bespoke products, and our in-house design and prototyping facilities mean we can react quickly to such requests. The R&D department at Precision Lighting continues to update its existing ranges and develop new products to meet the ever expanding needs of the market. We are sure that you will like what you see, and we look forward to lighting your future projects.



CASE STUDIES	004
PROJECT LIST	018
PAGE GUIDE	020
LUMINAIRE INDEX	021
LUMINAIRES	022
BASIS TRACK	056
RETRAC	058
CABLE SYSTEM	060
EUTRAC ADAPTOR	062
MONOPOINTS	064
ACCESSORIES	074
LAMPS	081
TRANSFORMERS	082
SAMPLE FINISHES	085





Brief

Cha Cha Moon commissioned Firefly Lighting Design to undertake the design of their restaurant in Whiteleys. They required a track system and luminaire that would fit in the compact space between the bamboo beams and the concrete ceiling. The spotlight needed to have a small aperture to fit between the tightly spaced beams, whilst also minimising glare and maintaining visual comfort.

Requirements & Constraints

- Functional light output from a minimal luminaire
- Good glare control
- The ability to install a large number of luminaires over a long run of track
- Black powder coated finish

Solution

Precision Lighting supplied our Microspot C16 luminaire mounted on transformer adaptors for 3-circuit Eutrac. The 177 spotlights were finished in matt black powder coat and hidden away out of sight between the beams and the ceiling. Short snoots were installed to minimise any glare, and fit between the bamboo beams.

System Eutrac [p. 62]

Luminaire Microspot C16 [p. 41]

Finish Black RAL 9005 [35% Gloss]

Lamp MR16

Accessories Short Snoot | Louvre [p. 78 - 80]

Lighting Designer Firefly Lighting Design



Brief

Isometrix Lighting + Design were commissioned to illuminate the refurbished Home House Club. The building's Grade I listed status meant that no additional lighting could be recessed or ceiling mounted, leaving limited fixing options.

Requirements & Constraints

- No lighting to be recessed or suspended from the ceiling
- Functional task spotlighting
- Luminaires to discreetly blend into the architecture and decoration of the room
- Good glare control
- Track to be suitable for wall mounting in horizontal and vertical planes

Solution

Isometrix Lighting + Design specified the Microspot S11 luminaire for the reception, the lounge, and the fantastic Zaha Hadid designed Home House Bar. In total, 55 spotlights were mounted to Basis Track systems running around the perimeters of the rooms. The luminaires were finished in brushed aluminium and fitted with wall wash snoots and louvres.

System Basis Track [p. 56]

Luminaire Microspot S11 [p. 42]

Finish Brushed Aluminium

Lamp MR11

Accessories Wall Wash Snoot | Louvre [p. 78 - 80]

Lighting Designer Isometrix Lighting + Design



Brief

Lighting Design International were commissioned to illuminate the Imago Art Gallery in Clifford Street, a centre for Italian art in London. They were looking to specify a versatile contemporary track system and spotlight to provide excellent lighting for the diverse artworks on display.

Requirements & Constraints

- Versatile and adjustable spotlights
- All fittings to accept a softening lens
- Emergency luminaires to match the main display lighting
- Custom made LED version for one exhibition

Solution

Lighting Design International specified Precision Lighting to light the display galleries on all four floors. Our Basis Track system was used throughout, supporting 146 Retro 16 spotlights in brushed aluminium finish. We also manufactured 12 custom twin-headed Retro 16 spotlights for the emergency lighting, with mains voltage halogen lamps. For a later exhibition where the artist required an LED light source, we manufactured 10 custom Retro 16 spotlights fitted with a 14W Cree MCE LED module.

System Basis Track [p. 56]

Luminaire Retro 16 [p. 39]

Finish Brushed Aluminium

Lamp MR16 3000K, 4500K | LED 6000K

Accessories Short Snoot | Wall Wash Snoot | Softening Lens [p. 78 - 80]

Lighting Designer Lighting Design International



Brief

Lighting Force were commissioned to design and supply all the luminaires for the flagship UGG® Australia store at Westfield. Based on a new concept, the design called for waves of bronze curved track running down each side of the store. Fixing points were limited by a Zebrano raft running down the centre of the space, supporting angled canvas sails, neither of which could be fixed to.

Requirements & Constraints

- The curved tracks could only be supported every 2m
- Tracks formed to irregular curves
- Bronze metallic & custom powder coated finishes
- Short delivery times
- Easy installation

Solution

Precision lighting worked closely with Lighting Force to design a custom suspension system to which our rubbed bronze Basis Track was then attached, running 82 Rotor spotlights. The suspension system and track were supported 2.3m from the concrete ceiling, allowing the system to protrude through the gaps between the sails. The suspension system was carefully designed to take into account any variance in ceiling height on site, and prevent sagging between the main suspension points. Similar systems have since been installed at UGG® Australia Covent Garden, and more recently at UGG® Australia Manchester, in conjunction with Into Lighting.

System Custom Supported Basis Track [p. 56]

Luminaire Rotor [p. 46]

Finish Rubbed Bronze | Custom Powder Coating [RAL 8025]

Lamp MR16

Lighting Designer Lighting Force



Brief

Fine Art Lighting were commissioned to light two important works of art in the dining room of a private residence in London. The artworks were hung in front of mirrors, presenting a number of difficulties.

Requirements & Constraints

- No power feed behind the artwork
- No fixing points on the mirrored wall or on the suspended fabric ceiling
- Good glare control
- No glare on the artwork from any seated position at the table
- No light or glare reflected from the mirror
- The artwork was required to be lit between 200-300 Lux

Solution

Fine Art lighting and Precision Lighting decided that the best way to overcome all these issues was to frame the picture with light. Any light spill on to the mirror could potentially reflect into the eyes of the guests sat at the table. The indirect glare on the painting, direct glare from the luminaire and reflected glare from the mirror were all taken into consideration when positioning the spotlights in the room. Two luminaires were used on opposite sides of the painting to provide a very even illuminance level. Precision lighting designed and manufactured a framing projector that was not only a third smaller than commercial products on the market, but also had removeable adjusting arms for a cleaner aesthetic.

System Custom Monopoint

Luminaire Custom Framing Projector [p. 76]

Finish White [BS10B15]

Lamp MR16

Rating 50W Max

Accessories 6mm Louvre [p. 80]

Lighting Designer Rupert Barth von Wehrenalp, Fine Art Lighting



Brief

Simon Knight of Lux Lucis was commissioned to illuminate the refurbished Temple Methodist Church in Taunton. One challenge was how to light the beautiful wooden panelled vaulted ceiling above, and the seating area for the congregation below.

Requirements & Constraints

- Direct indirect illumination
- A contemporary chandelier that is sympathetic to the architecture

Solution

Precision Lighting manufactured eight custom direct indirect chandeliers. The 2m diameter rings of Basis Track are suspended 5m below the ceiling. Each ring supports 12 Rotor spotlights, fed from a remote transformer via a custom made ceiling plate.

System Basis Track [p. 56]

Luminaire Rotor [p.46]

Finish Brushed Aluminium

Lamp MR16

Lighting Designer Simon Knight, Lux Lucis



Brief

Lighting Design International were commissioned to illuminate the refurbished Grade II listed Pavilion at Lord's Cricket Ground. They required a discreet wall mounted track system to light all the artwork in the famous Long Room.

Requirements & Constraints

- Wall mounted track system to blend into the architecture
- Single and double headed spotlights
- Good glare control

Solution

LDI specified our surface mounted ReTrac system, designing a mounting detail so that the track blended into the period features of the room. The ReTrac was then finished with a cover strip painted to match the walls. The luminaires are a custom single or double-headed version of the Phantasia picture light, fitted with backlight shields, snoots and louvres.

System ReTrac [p. 58]

Luminaire Custom Phantasia [p. 50]

Finish Brushed Aluminium | White

Lamp MR16

Accessories Short Snoot | Louvre | Backlight Shield [p. 79 - 80]

Lighting Designer Lighting Design International

Precision Lighting has completed numerous projects over the last few years, encompassing everything from Museums and Galleries, Retail and Hospitality work, through to domestic projects both large and small. A selection of projects is listed below.

Galleries & Museums

- Benjamin Franklin House** London, UK
- British Museum** London, UK
- Cabinet War Rooms** London, UK
 - Harmsworth Room
- Christies** London, UK
- Fitzwilliam Museum** Cambridge, UK
- Horniman Museum** London, UK
- Imago Art Gallery** London, UK
- Isabella Stewart Gardner Museum** Boston, USA
- Jewish Museum** London, UK
- London Transport Museum** London, UK
- Maritime Museum** Bermuda
- Michael Hoppen Gallery** London, UK
- National Portrait Gallery** UK
 - Beningbrough Hall, York
- Natural History Museum** London, UK
 - The Darwin Centre
- Royal Academy of Arts** London, UK
- Royal Navy Submarine Museum** Gosport, UK
- Sphinx Fine Art** London, UK
- TAG Heuer 360 Museum** La Chaux-de-Fonds, CH
- The Foundling Museum** London, UK
- Time and Tide Museum** Great Yarmouth, UK
- Victoria & Albert Museum** London, UK
 - British Galleries
 - Ceramics Galleries
 - Medieval & Renaissance Galleries
 - Jewellery Gallery

Retail

- Chameleon** London, UK
- Chaos Hair Design** London, UK
- De Beers** London, UK
- Fortnum & Mason** London, UK
- Harrods** London, UK
 - Ralph Lauren
- Harvey Nichols** London, UK
- Hugo Boss** Berlin, DE
- Liberty** London, UK
- Mulberry** Heathrow Terminal 4, UK
- Niketown** London, UK
- Tom Ford**
 - Baku, AZE
 - Milan, ITA
 - Moscow, RUS
- UGG® Australia** UK
 - Westfield Shopping Centre, London
 - Covent Garden, London
 - Manchester
- Wimbledon Wine Cellar** UK
 - Wimbledon
 - Chiswick

Entertainment Venues

- Digital Media Centre** Leicester, UK
- New Wolsey Theatre** Ipswich, UK
- Royal Academy of Music** London, UK

Hospitality

- Art Workers Guild** London, UK
- Athenæum Club** London, UK
- Brasserie Blanc** UK
 - Chelmsford
 - Milton Keynes
 - Winchester
- Caledonian Club** London, UK
- Cha Cha Moon** London, UK
- Çinar** Baku, AZE
- Centre Parcs** UK
 - Sherwood Forest Village
- Dubai Creek Hotel** Dubai, UAE
- Goldsmiths Hall** London, UK
- Hakkasan** Abu Dhabi, UAE
- Home House Club** London, UK
- Hotel Kilkenny** Kilkenny, IRL
- Inner Temple** London, UK
- Institute of Directors Brasserie** London, UK
- Lord's Pavilion** London, UK
- Manchester 235 Casino** Manchester, UK
- Merchant Taylors' Hall** London, UK
- Oxford and Cambridge Club** London, UK
- Reef Bar** London, UK
- Royal Automobile Club** London, UK
- Savoy Hotel** London, UK
- Sketch Restaurant** London, UK
- The Garrick Club** London, UK
- The Langham Hotel** London, UK

Educational Establishments

- Cambridge University** Cambridge, UK
 - St John's College
- Oxford University** Oxford, UK
 - Brasenose College
 - Lincoln College
 - Magdalen College
 - Merton College
 - New College
 - St John's College
- Royal Grammar School** Newcastle, UK

Additional Projects

- 10 Downing Street** London, UK
- Carat Group UK** London, UK
- Centre Point** London, UK
- Chatsworth House** Bakewell, UK
- Hampton Court Palace** London, UK
- Hardwick Hall** Chesterfield, UK
- Kennel Club** London, UK
- Lord Foster**
 - Three private residences
- Middlesbrough Library** Middlesbrough, UK
- Portcullis House** London, UK
- Protean International** Brackley, UK
- St Mary's Church East Finchley** London, UK
- St Paul's Cathedral** London, UK
- Temple Methodist Church** Taunton, UK

