



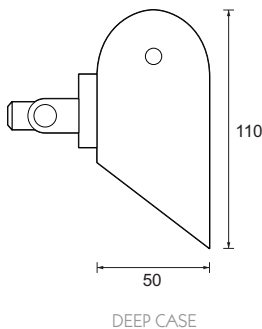
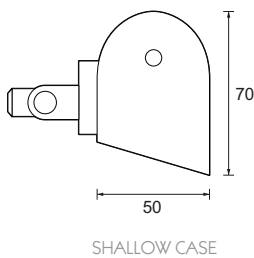
Category Interior use only IP20
Material Aluminium
Finish Gold Powder Coating
Lamp MR11 - 20W [QR-CBC 35] | G4 Capsule - 5W, 10W
Voltage 12V
Head Sizes 3.5" - 60"
Gear Type Remote
Accessories Softening Lens | UV Lens



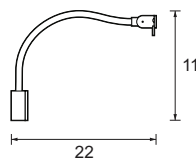
Unlike conventional picture lights with linear light sources, the Academy Light uses miniature spot light beams to illuminate the painting's surface creating a more even light distribution across and importantly down the painting. The Academy Light can be customised to the specific requirements of individual paintings and items. Customisation features include:

- Head length
- Head type - shallow or deep
- Arm length and design
- Number of arms
- Choice of lamps
- Lamp holder quantity and position
- Softening lenses for mirror reflectors
- UV lenses for mirror reflectors
- Special miniature heads

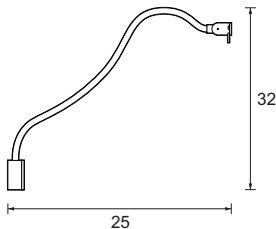
The Picture lights come with a wall mounted fixture and a plug in transformer. For more information and details on custom fittings please contact us to discuss further.



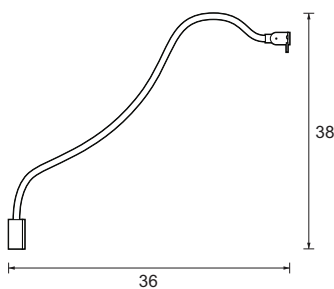
Notes
 For lamping options and accessories please see separate spec sheets.



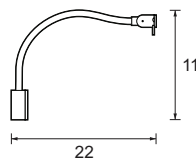
TRADITIONAL ARM - SMALL



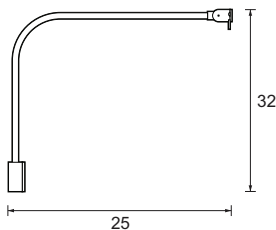
TRADITIONAL ARM - MEDIUM



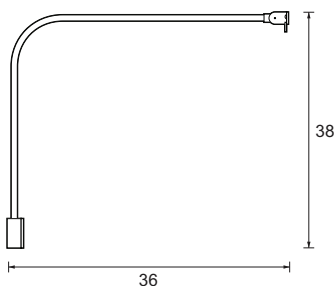
TRADITIONAL ARM - LONG



CLASSIC ARM - SMALL



CLASSIC ARM - MEDIUM



CLASSIC ARM - LONG

Fixture Depth

Two cross-sectional depths are available and for most applications the shallow profile is appropriate. The deep profile is used primarily for paintings over 55" in height and in special locations, particularly when paintings are hung above eye level.



SHALLOW CASE



DEEP CASE

	SHALLOW CASE	DEEP CASE	
ONE ARM	3.5" 90 mm	APL-SC-3.5	APL-DC-3.5
	6" 150 mm	APL-SC-6	APL-DC-6
	8" 200 mm	APL-SC-8	APL-DC-8
	10" 250 mm	APL-SC-10	APL-DC-10
	12" 300 mm	APL-SC-12	APL-DC-12
	14" 360 mm	APL-SC-14	APL-DC-14
	16" 410 mm	APL-SC-16	APL-DC-16
	18" 460 mm	APL-SC-18	APL-DC-18
	20" 510 mm	APL-SC-20	APL-DC-20
	22" 560 mm	APL-SC-22	APL-DC-22
	24" 610 mm	APL-SC-24	APL-DC-24
	26" 660 mm	APL-SC-26	APL-DC-26
28" 710 mm	APL-SC-28	APL-DC-28	
30" 760 mm	APL-SC-30	APL-DC-30	
32" 810 mm	APL-SC-32	APL-DC-32	
34" 860 mm	APL-SC-34	APL-DC-34	
36" 910 mm	APL-SC-36	APL-DC-36	
38" 970 mm	APL-SC-38	APL-DC-38	
TWIN ARM	40" 1020 mm	APL-SC-40	APL-DC-40
	42" 1070 mm	APL-SC-42	APL-DC-42
	44" 1120 mm	APL-SC-44	APL-DC-44
	46" 1170 mm	APL-SC-46	APL-DC-46
	48" 1230 mm	APL-SC-48	APL-DC-48
	50" 1270 mm	APL-SC-50	APL-DC-50
	52" 1320 mm	APL-SC-52	APL-DC-52
	54" 1370 mm	APL-SC-54	APL-DC-54
	56" 1420 mm	APL-SC-56	APL-DC-56
	58" 1470 mm	APL-SC-58	APL-DC-58
	60" 1520 mm	APL-SC-60	APL-DC-60

Arm Selection

The primary factor in selecting arms is the height of the painting (longer arms are needed for taller paintings). In order to increase the amount of light reaching the bottom of the canvas and to avoid reflections, a range of standard arms in different sizes and shapes is available.



TRADITIONAL ARM



CLASSIC ARM

	TRADITIONAL ARM	CLASSIC ARM
SHORT	APL-T-S	APL-C-S
MEDIUM	APL-T-M	APL-C-M
LONG	APL-T-L	APL-C-L

Additional Components



MOUNTING BRACKET

APL-MB



LAMP HOLDER

APL-LH



REFLECTOR MIRROR

APL-RM



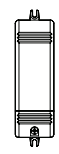
REFLECTOR MIRROR GOLD

APL-RMG



60W TRANSFORMER

APL-PS60



105W TRANSFORMER

APL-PS105