



Category Interior use only IP20

Material Machined Aluminium

Finish Brushed Aluminium | Black | White | Custom

System Monopoint | LV tracks

Lockable Pan & Tilt

System Power 1.9W

Module Output 140lm

Absolute Output 125lm

LOR 89%

Colour Temperature 3000K | 2700K | *

CRI Ra: 95 **TM-30** Rf: 93 Rg: 99

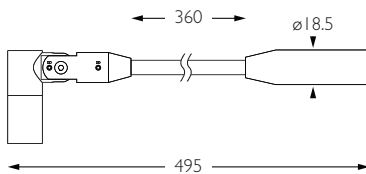
Optics 12°

Gear Type Dimmable options available

Weight 101g

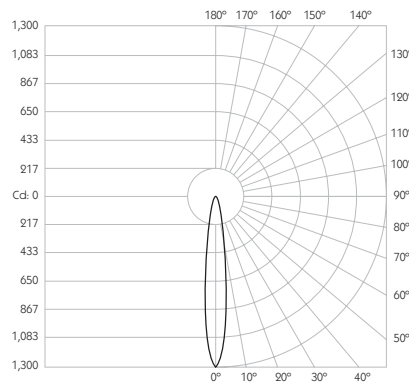
Stem Length 360mm | Custom available upon request

* Please enquire as to the availability of non-standard Colour Temperatures.



Pico S1 Long Snoot is a discreet, low glare 95CRI LED spotlight, mounted to a 360mm stem. The spotlight comes as standard in white, black and brushed aluminium finishes, and has three site changeable optics for flexible distribution. Movement is aided with a low friction bearing rotation and constant torque tilt mechanism, lockable in both pan and tilt. The Precision Lighting Jack Plug system enables the luminaire to be easily disconnected and reconnected to all of Precision Lighting's systems, offering flexibility throughout the product's lifetime. The onboard 24V driver ensures overcurrent protection and is not polarity sensitive. Pico S1 is machined from aerospace grade 6063-T6 aluminium, delivering a lumen package of 125lm at 1.9W.

Product Photometry independently tested in accordance with LM-79



Distance (m)	Beam Diameter (m)	Illuminance (lx)
1m	0.21m	1,920 lx
2m	0.42m	305 lx
3m	0.63m	136 lx
4m	0.84m	76 lx
5m	1.05m	49 lx

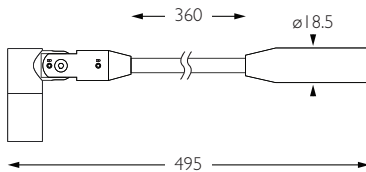
IP 20	95 CRI	CE	ETL US
LED	1.9W	24V	PART L
360°	180°	0.5m	Accessories Available

Mounting System	Part Number	Part Number	Part Number	Part Number	Part Number	Part Number	Part Number	Part Number
Cable	BT-732-AL-XX9512	RT-732-AL-XX9512						
Basis Track								
ReTrac								
Eutrac								
Trimless Monopoint								
Power Monopoint								
Flat Monopoint								
Node Monopoint								
Surface Monopoint								
Finish								
Brushed Aluminium								
Black								
White								

For 3000K Substitute XX with 30 | For 2700K Substitute XX with 27

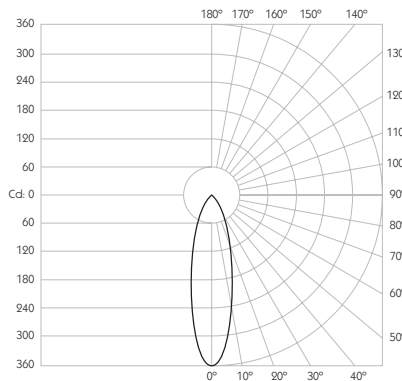


- Category** Interior use only IP20
 - Material** Machined Aluminium
 - Finish** Brushed Aluminium | Black | White | Custom
 - System** Monopoint | LV tracks
 - Lockable** Pan & Tilt
 - System Power** 1.9W
 - Module Output** 140lm
 - Absolute Output** 114lm
 - LOR** 81%
 - Colour Temperature** 3000K | 2700K | *
 - CRI** Ra: 95 **TM-30** Rf: 93 Rg: 99
 - Optics** 30°
 - Gear Type** Dimmable options available
 - Weight** 101g
 - Stem Length** 360mm | Custom available upon request
- * Please enquire as to the availability of non-standard Colour Temperatures.



Pico S1 Long Snoot is a discreet, low glare 95CRI LED spotlight, mounted to a 360mm stem. The spotlight comes as standard in white, black and brushed aluminium finishes, and has three site changeable optics for flexible distribution. Movement is aided with a low friction bearing rotation and constant torque tilt mechanism, lockable in both pan and tilt. The Precision Lighting Jack Plug system enables the luminaire to be easily disconnected and reconnected to all of Precision Lighting's systems, offering flexibility throughout the product's lifetime. The onboard 24V driver ensures overcurrent protection and is not polarity sensitive. Pico S1 is machined from aerospace grade 6063-T6 aluminium, delivering a lumen package of 125lm at 1.9W.

Product Photometry independently tested in accordance with LM-79



Distance (m)	Beam Diameter (m)	Illuminance (lx)
1m	0.54m	360 lx
2m	1.07m	90 lx
3m	1.61m	40 lx
4m	2.14m	23 lx
5m	2.68m	14 lx

	BT-732-AL-XX9530	RT-732-AL-XX9530		MPS-732-AL-XX9530		MPX-732-AL-XX9530	MPY-732-AL-XX9530	MPZ-732-AL-XX9530
		RT-732-BK-XX9530		MPS-732-BK-XX9530		MPX-732-BK-XX9530	MPY-732-BK-XX9530	MPZ-732-BK-XX9530
		RT-732-WH-XX9530		MPS-732-WH-XX9530		MPX-732-WH-XX9530	MPY-732-WH-XX9530	MPZ-732-WH-XX9530

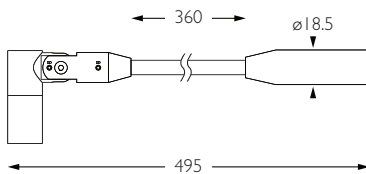
For 3000K Substitute XX with 30 | For 2700K Substitute XX with 27



- Category** Interior use only IP20
- Material** Machined Aluminium
- Finish** Brushed Aluminium | Black | White | Custom
- System** Monopoint | LV tracks
- Lockable** Pan & Tilt
- System Power** 1.9W
- Module Output** 140lm
- Absolute Output** 125lm
- LOR** 89%
- Colour Temperature** 3000K | 2700K | *
- CRI** Ra: 95 **TM-30** Rf: 93 Rg: 99
- Optics** 60°
- Gear Type** Dimmable options available
- Weight** 101g
- Stem Length** 360mm | Custom available upon request

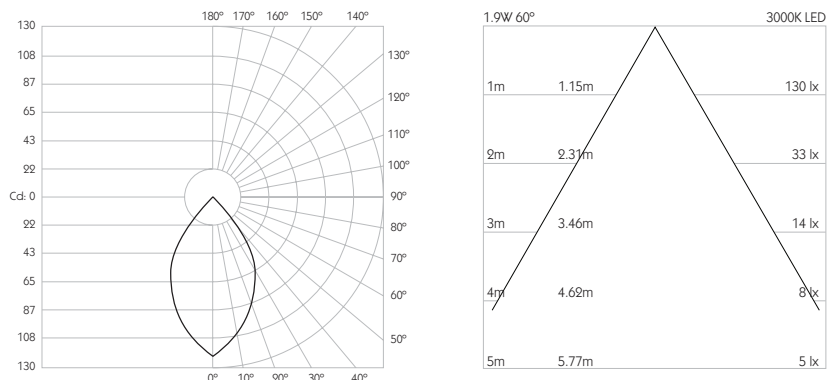


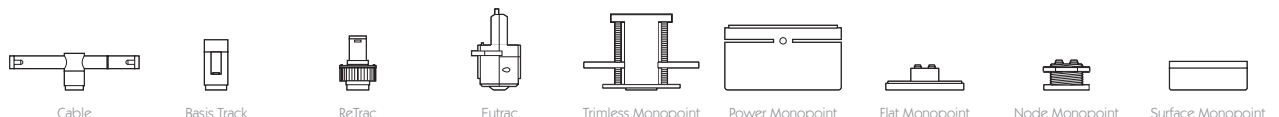
* Please enquire as to the availability of non-standard Colour Temperatures.



Pico S1 Long Snoot is a discreet, low glare 95CRI LED spotlight, mounted to a 360mm stem. The spotlight comes as standard in white, black and brushed aluminium finishes, and has three site changeable optics for flexible distribution. Movement is aided with a low friction bearing rotation and constant torque tilt mechanism, lockable in both pan and tilt. The Precision Lighting Jack Plug system enables the luminaire to be easily disconnected and reconnected to all of Precision Lighting's systems, offering flexibility throughout the product's lifetime. The onboard 24V driver ensures overcurrent protection and is not polarity sensitive. Pico S1 is machined from aerospace grade 6063-T6 aluminium, delivering a lumen package of 125lm at 1.9W.

Product Photometry independently tested in accordance with LM-79





	BT-732-AL-XX9560	RT-732-AL-XX9560	MPS-732-AL-XX9560	MPX-732-AL-XX9560	MPY-732-AL-XX9560	MPZ-732-AL-XX9560
		RT-732-BK-XX9560	MPS-732-BK-XX9560	MPX-732-BK-XX9560	MPY-732-BK-XX9560	MPZ-732-BK-XX9560
	RT-732-WH-XX9560		MPS-732-WH-XX9560	MPX-732-WH-XX9560	MPY-732-WH-XX9560	MPZ-732-WH-XX9560

For 3000K Substitute XX with 30 | For 2700K Substitute XX with 27