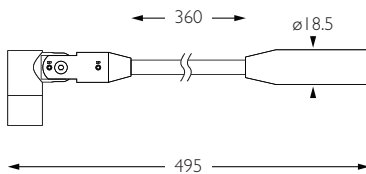




- Category** Interior use only IP20
- Material** Machined Aluminium
- Finish** Brushed Aluminium | Black | White | Custom
- System** Monopoint | LV tracks
- Lockable** Pan & Tilt
- Accessories** Snoots
- System Power** 1.9W
- Module Output** 140lm
- Absolute Output** 130lm
- LOR** 93%
- Colour Temperature** 3000K | 2700K | \*
- CRI** Ra: 95    **TM-30** Rf: 93 Rg: 99
- Optics** 12°
- Gear Type** Dimmable options available
- Weight** 100g
- Stem Length** 360mm | Custom available upon request

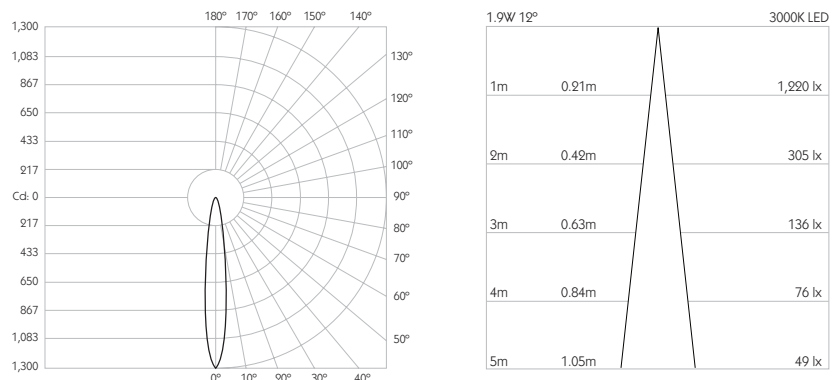


\* Please enquire as to the availability of non-standard Colour Temperatures.



Pico S1 is a discreet 95CRI LED, mounted to a 360mm stem, other stem lengths are available on request. The spotlight comes as standard in white, black and brushed aluminium finishes, and has three site changeable optics for flexible distribution. Movement is aided with a low friction bearing rotation and constant torque tilt mechanism, lockable in both pan and tilt. The Precision Lighting Jack Plug system enables the luminaire to be easily disconnected and reconnected to all of Precision Lighting's systems, offering flexibility throughout the product's lifetime. The onboard 24V driver ensures overcurrent protection and is not polarity sensitive. Pico S1 is machined from aerospace grade 6063-T6 aluminium, delivering a lumen package of 140lm at 1.9W.

Product Photometry independently tested in accordance with LM-79



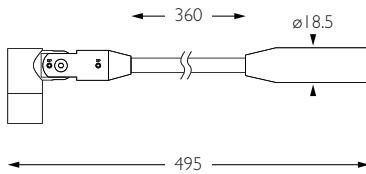
|  |  |  |  |
|--|--|--|--|
|  |  |  |  |
|  |  |  |  |
|  |  |  |  |

|  |                  |                  |  |                   |  |                   |                   |                   |
|--|------------------|------------------|--|-------------------|--|-------------------|-------------------|-------------------|
|  |                  |                  |  |                   |  |                   |                   |                   |
|  | BT-702-AL-XX9512 | RT-702-AL-XX9512 |  | MPS-702-AL-XX9512 |  | MPX-702-AL-XX9512 | MPY-702-AL-XX9512 | MPZ-702-AL-XX9512 |
|  |                  | RT-702-BK-XX9512 |  | MPS-702-BK-XX9512 |  | MPX-702-BK-XX9512 | MPY-702-BK-XX9512 | MPZ-702-BK-XX9512 |
|  |                  | RT-702-WH-XX9512 |  | MPS-702-WH-XX9512 |  | MPX-702-WH-XX9512 | MPY-702-WH-XX9512 | MPZ-702-WH-XX9512 |

For 3000K Substitute XX with 30 | For 2700K Substitute XX with 27

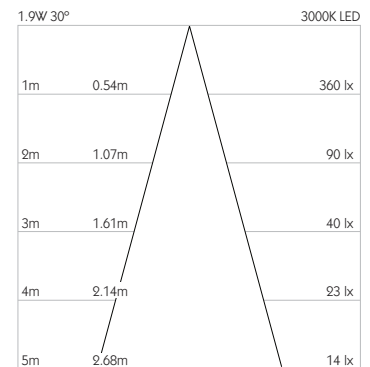
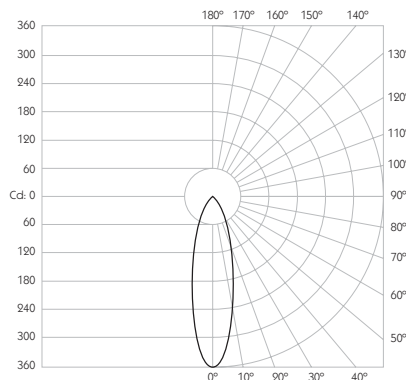


**Category** Interior use only IP20  
**Material** Machined Aluminium  
**Finish** Brushed Aluminium | Black | White | Custom  
**System** Monopoint | LV tracks  
**Lockable** Pan & Tilt  
**Accessories** Snoots  
**System Power** 1.9W  
**Module Output** 140lm  
**Absolute Output** 119lm  
**LOR** 85%  
**Colour Temperature** 3000K | 2700K | \*  
**CRI** Ra: 95    **TM-30** Rf: 93 Rg: 99  
**Optics** 30°  
**Gear Type** Dimmable options available  
**Weight** 100g  
**Stem Length** 360mm | Custom available upon request  
 \* Please enquire as to the availability of non-standard Colour Temperatures.

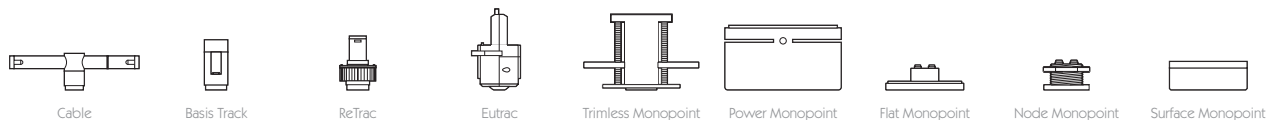


Pico S1 is a discreet 95CRI LED, mounted to a 360mm stem, other stem lengths are available on request. The spotlight comes as standard in white, black and brushed aluminium finishes, and has three site changeable optics for flexible distribution. Movement is aided with a low friction bearing rotation and constant torque tilt mechanism, lockable in both pan and tilt. The Precision Lighting Jack Plug system enables the luminaire to be easily disconnected and reconnected to all of Precision Lighting's systems, offering flexibility throughout the product's lifetime. The onboard 24V driver ensures overcurrent protection and is not polarity sensitive. Pico S1 is machined from aerospace grade 6063-T6 aluminium, delivering a lumen package of 140lm at 1.9W.

Product Photometry independently tested in accordance with LM-79



|       |        |      |                       |
|-------|--------|------|-----------------------|
| IP 20 | 95 CRI | CE   | ETL US                |
| LED   | 1.9W   | 24V  | PART L                |
| 360°  | 180°   | 0.5m | Accessories Available |



|       |                  |                  |                   |                   |                   |                   |
|-------|------------------|------------------|-------------------|-------------------|-------------------|-------------------|
| Grey  | BT-702-AL-XX9530 | RT-702-AL-XX9530 | MPS-702-AL-XX9530 | MPX-702-AL-XX9530 | MPY-702-AL-XX9530 | MPZ-702-AL-XX9530 |
| Black |                  | RT-702-BK-XX9530 | MPS-702-BK-XX9530 | MPX-702-BK-XX9530 | MPY-702-BK-XX9530 | MPZ-702-BK-XX9530 |
| White |                  | RT-702-WH-XX9530 | MPS-702-WH-XX9530 | MPX-702-WH-XX9530 | MPY-702-WH-XX9530 | MPZ-702-WH-XX9530 |

For 3000K Substitute XX with 30 | For 2700K Substitute XX with 27

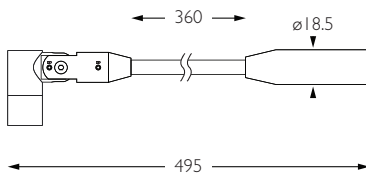
WIDE FLOOD



- Category** Interior use only IP20
- Material** Machined Aluminium
- Finish** Brushed Aluminium | Black | White | Custom
- System** Monopoint | LV tracks
- Lockable** Pan & Tilt
- Accessories** Snoots
- System Power** 1.9W
- Module Output** 140lm
- Absolute Output** 130lm
- LOR** 93%
- Colour Temperature** 3000K | 2700K | \*
- CRI** Ra: 95    **TM-30** Rf: 93 Rg: 99
- Optics** 60°
- Gear Type** Dimmable options available
- Weight** 100g
- Stem Length** 360mm | Custom available upon request

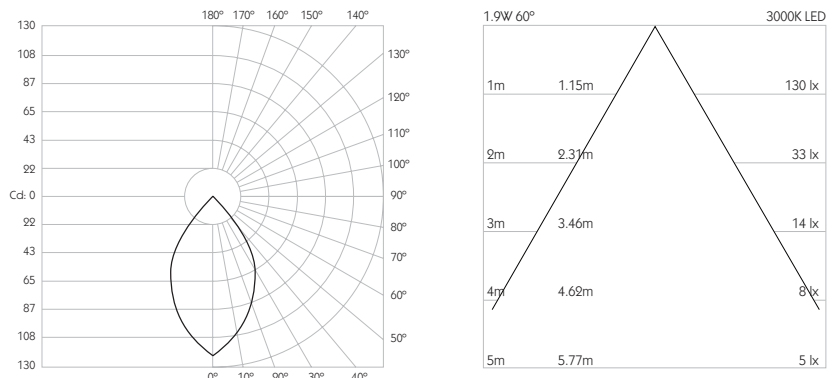


\* Please enquire as to the availability of non-standard Colour Temperatures.



Pico S1 is a discreet 95CRI LED, mounted to a 360mm stem, other stem lengths are available on request. The spotlight comes as standard in white, black and brushed aluminium finishes, and has three site changeable optics for flexible distribution. Movement is aided with a low friction bearing rotation and constant torque tilt mechanism, lockable in both pan and tilt. The Precision Lighting Jack Plug system enables the luminaire to be easily disconnected and reconnected to all of Precision Lighting's systems, offering flexibility throughout the product's lifetime. The onboard 24V driver ensures overcurrent protection and is not polarity sensitive. Pico S1 is machined from aerospace grade 6063-T6 aluminium, delivering a lumen package of 140lm at 1.9W.

Product Photometry independently tested in accordance with LM-79



|  |  |  |  |
|--|--|--|--|
|  |  |  |  |
|  |  |  |  |
|  |  |  |  |

|  |                  |                  |  |                   |  |                   |                   |                   |
|--|------------------|------------------|--|-------------------|--|-------------------|-------------------|-------------------|
|  |                  |                  |  |                   |  |                   |                   |                   |
|  | BT-702-AL-XX9560 | RT-702-AL-XX9560 |  | MPS-702-AL-XX9560 |  | MPX-702-AL-XX9560 | MPY-702-AL-XX9560 | MPZ-702-AL-XX9560 |
|  |                  | RT-702-BK-XX9560 |  | MPS-702-BK-XX9560 |  | MPX-702-BK-XX9560 | MPY-702-BK-XX9560 | MPZ-702-BK-XX9560 |
|  |                  | RT-702-WH-XX9560 |  | MPS-702-WH-XX9560 |  | MPX-702-WH-XX9560 | MPY-702-WH-XX9560 | MPZ-702-WH-XX9560 |

For 3000K Substitute XX with 30 | For 2700K Substitute XX with 27