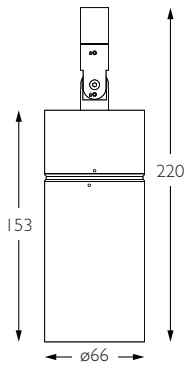




**Category** Interior use only IP20  
**Material** Machined Aluminium  
**Finish** Brushed Aluminium | Black | White | Custom  
**System** Eutrac | Monopoint | LV tracks  
**Lockable** Pan & Tilt  
**Accessories** Snoots | Louvres | Lenses  
**System Power** 9.8W  
**Module Output** 712lm  
**Absolute Output** 678lm  
**LOR** 95%  
**Colour Temperature** 3000K | 2700K | \*  
**CRI** Ra: 95    **TM-30** Rf: 93 Rg: 99  
**Optics** 12°  
**Gear Type** Dimmable options available  
**Weight** 550g

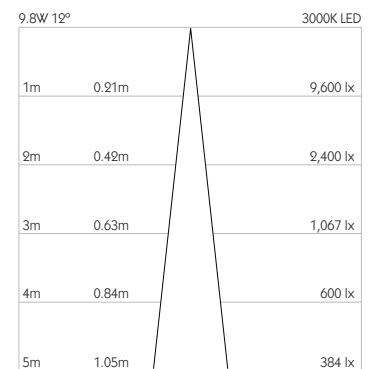
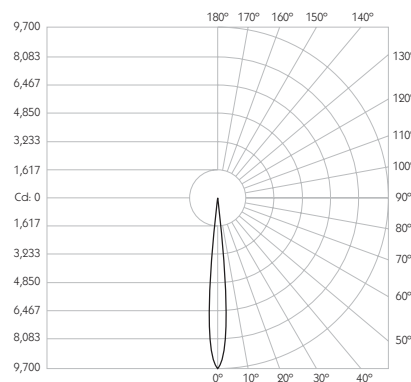


\* Please enquire as to the availability of non-standard Colour Temperatures.



Designed around the classical proportions of the golden ratio, Evo X16 is a 95CRI LED spotlight. The spotlight comes as standard in white, black and brushed aluminium finishes, and has three tool-less interchangeable optics for flexible distribution. Movement is aided with a low friction bearing rotation and constant torque tilt mechanism, both lockable in pan and tilt. The Precision Lighting Jack Plug system enables the luminaire to be easily disconnected and reconnected to all of Precision Lighting's systems, offering flexibility throughout the product's lifetime. The onboard 24V driver ensures overcurrent protection and is not polarity sensitive. Evo X16 is machined from aerospace grade 6063-T6 aluminium, delivering a lumen package of 712lm at 9.8W.

Product Photometry independently tested in accordance with LM-79



IP 20	95 CRI	CE	ETL US
LED	9.8W	24V	PART L
360°	180°	0.5m	Accessories Available

	BT-472-AL-XX9512	RT-472-AL-XX9512	EUT3-472-AL-XX9512	MPS-472-AL-XX9512		MPX-472-AL-XX9512	MPY-472-AL-XX9512	MPZ-472-AL-XX9512
		RT-472-BK-XX9512	EUT3-472-BK-XX9512	MPS-472-BK-XX9512		MPX-472-BK-XX9512	MPY-472-BK-XX9512	MPZ-472-BK-XX9512
		RT-472-WH-XX9512	EUT3-472-WH-XX9512	MPS-472-WH-XX9512		MPX-472-WH-XX9512	MPY-472-WH-XX9512	MPZ-472-WH-XX9512

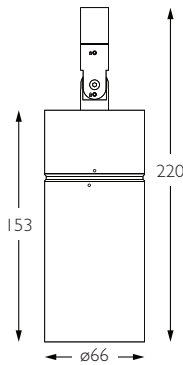
For 3000K Substitute XX with 30 | For 2700K Substitute XX with 27



**Category** Interior use only IP20  
**Material** Machined Aluminium  
**Finish** Brushed Aluminium | Black | White | Custom  
**System** Eutrac | Monopoint | LV tracks  
**Lockable** Pan & Tilt  
**Accessories** Snoots | Louvres | Lenses  
**System Power** 9.8W  
**Module Output** 712lm  
**Absolute Output** 678lm  
**LOR** 95%  
**Colour Temperature** 3000K | 2700K | \*  
**CRI** Ra: 95    **TM-30** Rf: 93 Rg: 99  
**Optics** 20°  
**Gear Type** Dimmable options available  
**Weight** 550g

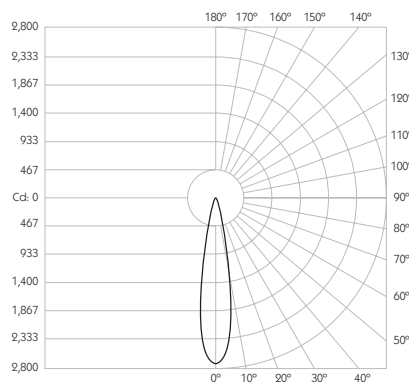


\* Please enquire as to the availability of non-standard Colour Temperatures.



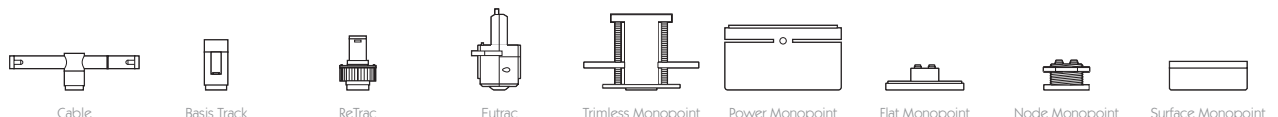
Designed around the classical proportions of the golden ratio, Evo X16 is a 95CRI LED spotlight. The spotlight comes as standard in white, black and brushed aluminium finishes, and has three tool-less interchangeable optics for flexible distribution. Movement is aided with a low friction bearing rotation and constant torque tilt mechanism, both lockable in pan and tilt. The Precision Lighting Jack Plug system enables the luminaire to be easily disconnected and reconnected to all of Precision Lighting's systems, offering flexibility throughout the product's lifetime. The onboard 24V driver ensures overcurrent protection and is not polarity sensitive. Evo X16 is machined from aerospace grade 6063-T6 aluminium, delivering a lumen package of 712lm at 9.8W.

Product Photometry independently tested in accordance with LM-79



Distance (m)	Beam Diameter (m)	Illuminance (lx)
1m	0.35m	2,731 lx
2m	0.71m	683 lx
3m	1.06m	303 lx
4m	1.41m	171 lx
5m	1.76m	109 lx

IP 20	95 CRI	CE	ETL US
LED	9.8W	24V	PART L
360°	180°	0.5m	Accessories Available



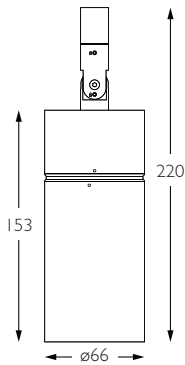
Finish	Cable	Basis Track	ReTrac	Eutrac	Trimless Monopoint	Power Monopoint	Flat Monopoint	Node Monopoint	Surface Monopoint
Grey		BT-472-AL-XX9520	RT-472-AL-XX9520	EUT3-472-AL-XX9520	MPS-472-AL-XX9520		MPX-472-AL-XX9520	MPY-472-AL-XX9520	MPZ-472-AL-XX9520
Black			RT-472-BK-XX9520	EUT3-472-BK-XX9520	MPS-472-BK-XX9520		MPX-472-BK-XX9520	MPY-472-BK-XX9520	MPZ-472-BK-XX9520
White			RT-472-WH-XX9520	EUT3-472-WH-XX9520	MPS-472-WH-XX9520		MPX-472-WH-XX9520	MPY-472-WH-XX9520	MPZ-472-WH-XX9520

For 3000K Substitute XX with 30 | For 2700K Substitute XX with 27



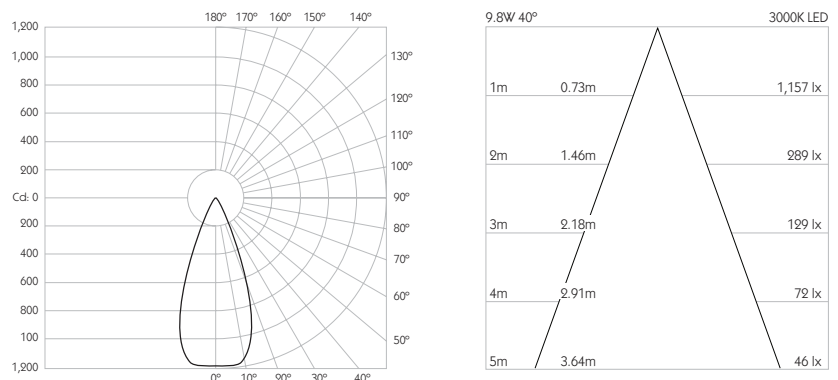
**Category** Interior use only IP20  
**Material** Machined Aluminium  
**Finish** Brushed Aluminium | Black | White | Custom  
**System** Eutrac | Monopoint | LV tracks  
**Lockable** Pan & Tilt  
**Accessories** Snoots | Louvres | Lenses  
**System Power** 9.8W  
**Module Output** 712lm  
**Absolute Output** 672lm  
**LOR** 94%  
**Colour Temperature** 3000K | 2700K | \*  
**CRI** Ra: 95    **TM-30** Rf: 93 Rg: 99  
**Optics** 40°  
**Gear Type** Dimmable options available  
**Weight** 550g

\* Please enquire as to the availability of non-standard Colour Temperatures.



Designed around the classical proportions of the golden ratio, Evo X16 is a 95CRI LED spotlight. The spotlight comes as standard in white, black and brushed aluminium finishes, and has three tool-less interchangeable optics for flexible distribution. Movement is aided with a low friction bearing rotation and constant torque tilt mechanism, both lockable in pan and tilt. The Precision Lighting Jack Plug system enables the luminaire to be easily disconnected and reconnected to all of Precision Lighting's systems, offering flexibility throughout the product's lifetime. The onboard 24V driver ensures overcurrent protection and is not polarity sensitive. Evo X16 is machined from aerospace grade 6063-T6 aluminium, delivering a lumen package of 712lm at 9.8W.

Product Photometry independently tested in accordance with LM-79



IP 20	95 CRI	CE	ETL US
LED	9.8W	24V	PART L
360°	180°	0.5m	Accessories Available

System	Cable	Basis Track	ReTrac	Eutrac	Trimless Monopoint	Power Monopoint	Flat Monopoint	Node Monopoint	Surface Monopoint
Grey		BT-472-AL-XX9540	RT-472-AL-XX9540	EUT3-472-AL-XX9540	MPS-472-AL-XX9540		MPX-472-AL-XX9540	MPY-472-AL-XX9540	MPZ-472-AL-XX9540
Black			RT-472-BK-XX9540	EUT3-472-BK-XX9540	MPS-472-BK-XX9540		MPX-472-BK-XX9540	MPY-472-BK-XX9540	MPZ-472-BK-XX9540
White			RT-472-WH-XX9540	EUT3-472-WH-XX9540	MPS-472-WH-XX9540		MPX-472-WH-XX9540	MPY-472-WH-XX9540	MPZ-472-WH-XX9540

For 3000K Substitute XX with 30 | For 2700K Substitute XX with 27